



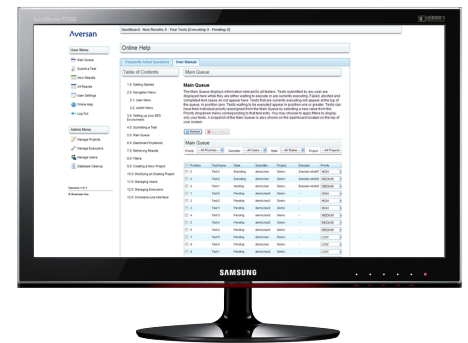
BATCH EXECUTION SYSTEM (BES)

PRODUCT BRIEF

The BES is an Aversan product that is used to maximize the utilization of one or more test resources amongst a large team of users. The BES handles remote test submission as well as results collection with configurable priority levels. As Aversan’s testing activities span different platforms and industries, the BES was developed with flexibility in mind so that it can be used effectively in virtually all software testing engagements. The BES can be purchased as a standalone product, or integrated within a test environment.

Benefits

- Back-end Python Script for a configurable interface with the target
- Web based Front End
 - Consistent between applications
 - Single port to be placed in a firewall facilitating secure remote access
- Maximizes target utilization by enabling prioritizing of specific test cases
- Cost and time savings with multiple projects, users as well as a user friendly interface for test submission and results collection



Project Summary

A customer was going through regression testing and had various manual procedures to run their tests. The duration of testing with manual processes and 20 target test stations, spanned two weeks while employees ran tests day and night, 7 days a week. With the set-up of Aversan’s Automated Test Equipment (ATE) and Batch Execution System (BES), the same tests were completed within 24 hours, approximately ten times faster, saving time and money.

Before & After

Automated Testing Equipment & Batch Execution System Implementation

